



# Disclaimer

This presentation is provided for informational purposes only. Nxu, Inc. ("Nxu") has prepared this presentation to assist interested parties in making their own evaluation in whether to purchase Nxu™ products or to invest in Nxu and for no other purpose. No representations or warranties, express or implied, are given in this presentation. To the fullest extent permitted by law, in no circumstances will Nxu or any of its stockholders, affiliates, representatives, partners, directors, officers, employees, advisers, or agents be responsible or liable for any direct, indirect, or consequential loss or loss of profit resulting from the use of this presentation, its contents, its exhibits, omissions, reliance on the information contained within it, or in opinions communicated in relation to it or otherwise arising in connection with it. Industry and market data used in this presentation have been obtained from third party industry publications and sources as well as from research reports prepared for other purposes. Nxu has not independently verified the data obtained from these sources and cannot assure the accuracy or completeness of the data. This data is subject to change and revision based upon changes in circumstances and changes in readily available inputs. Additionally, this presentation does not purport to be all inclusive or to contain all the information that may be required to make a full analysis of Nxu or its investment prospects. Viewers of this presentation should each make their own evaluation and such other investigations as they deem necessary to fully and accurately evaluate Nxu and whether Nxu would be a suitable investment for you.

## FORWARD LOOKING STATEMENTS.

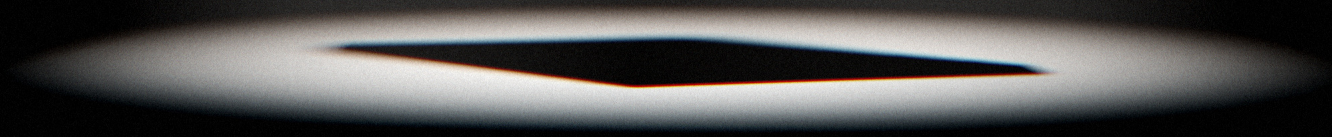
The information in this presentation includes "forward-looking statements" within the meaning of Section 27A of the Securities Act, and Section 21E of the Exchange Act. All statements, other than statements of present or historical fact included in this presentation, regarding Nxu and its strategy, future operations, financial position, estimated revenues, and losses, projected costs, prospects, plans and objectives of management are forward-looking statements. When used in this presentation, including any oral statements made in connection therewith, the words "could," "should," "will," "may," "believe," "anticipate," "intend," "estimate," "expect," "project," the negative of such terms and other similar expressions are intended to identify forward-looking statements, although not all forward-looking statements contain such identifying words. These forward-looking statements are based on management's current expectations and assumptions about future events and are based on currently available information as to the outcome and timing of future events. Except as otherwise required by applicable law, Nxu disclaims any duty to update any forward-looking statements, all of which are expressly qualified by the statements in this section, to reflect events or circumstances after the date of this presentation. Nxu cautions you that these forward-looking statements are subject to all of the risks and uncertainties, most of which are difficult to predict and many of which are beyond the control of Nxu. For a more detailed explanation of Nxu risk factors, please refer to the Company's most recently filed annual report on Form 10-K, quarterly reports, and registration statements filed with the SEC.

## TRADEMARKS.

This presentation contains trademarks, service marks, trade names, copyrights, patented information, and other intellectual property owned by Nxu, which is the sole property of Nxu™.



**Our vision is to enable a future where energy is abundant  
and easily accessible so that electric mobility is viable  
across all market segments.**



# Overview

WE ARE NXU™

## What We Do

We design and domestically manufacture battery cells and packs, megawatt charging stations, and residential / commercial energy storage systems.

## Market Focus

### Today

Energy & Infrastructure

### Tomorrow

Mobility

## Target Industries

Commercial & Residential Energy Storage

Automotive OEMs

Mining & Construction

Railway Transportation

eVTOL & Aviation

Marine & Maritime

## ADDITIONAL INFORMATION <sup>(01)</sup>

NXU, Inc.	
FOUNDED	2016
TICKER	NXU
EXCHANGE	Nasdaq
LISTING DATE	9.27.2022
COMPANY SIZE	144
PATENTS (INCLUDING PENDING)	38
HEADQUARTERS	Mesa, AZ



# Leadership

**Mark Hanchett**

FOUNDER / CEO / BOARD CHAIRMAN



**Annie Pratt**

PRESIDENT / BOARD DIRECTOR



**Apoorv Dwivedi**

CHIEF FINANCIAL OFFICER



**Jordan Christensen**

CHIEF LEGAL OFFICER



**Benoit Le Bourgeois**

VP OF USER EXPERIENCE



**Kate Sieker**

VP OF PEOPLE



**Srinivas Jasthi**

VP OF SOFTWARE



**Sarah Wyant**

VP OF FINANCE



**Britt Ide**

INDEPENDENT BOARD DIRECTOR



**Caryn Nightengale**

INDEPENDENT BOARD DIRECTOR



# Total Addressable Market

EV BATTERY

**\$225 billion**  
by 2030<sup>(02)</sup>

EV CHARGING

**\$182 billion**  
by 2030<sup>(03)</sup>

BATTERY ENERGY STORAGE

**\$394 billion**  
by 2030<sup>(04)</sup>



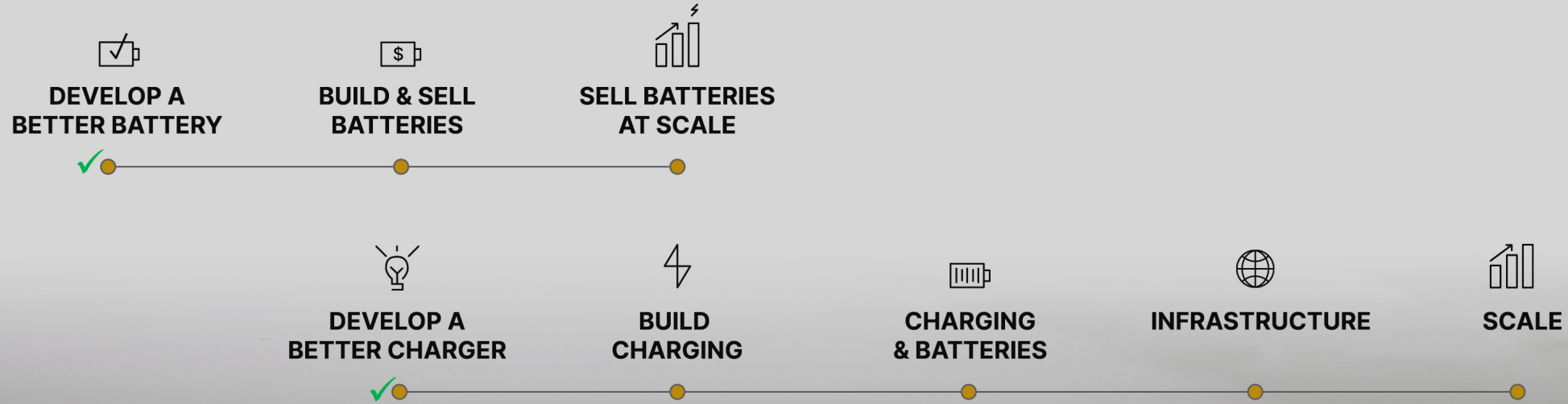
# Nxu™ Solutions

CRITICAL NEED	CURRENT AVAILABILITY	IMPORTANCE	
➤ Battery Capacity & Range		HIGH	
➤ Charging Infrastructure		HIGH	
➤ Energy Storage		HIGH	

**Designed to address shortcomings in existing EV infrastructure and remove critical barriers to adoption in commercial and industrial markets.**

Inadequate      Needs Improvement

# Our Strategy



**Energy**

**Mobility**

✓ Milestone achieved





# Milestone Driven GTM Strategy

GENERATES REVENUE AT EVERY STEP | DE-RISKS STEPS AND ADDS INCREMENTAL VALUE AT EVERY MILESTONE

## Crawl – Launch Energy Products

- First Cell & Pack Deliveries
- Pilot Production in Process
- Ready for Mass Production
- Launch Megawatt+ Charging Station
- Market Subscription-based energy-as-a-service

## Walk – Scale Battery Cell & Pack Production

- Targeting 1 MWh per day energy capability
- Expand Megawatt+ Charger footprint
- Deploy initial BESS solutions
- Targeting 4.5MW power capability

## Run – Deploy Energy Infrastructure Solutions

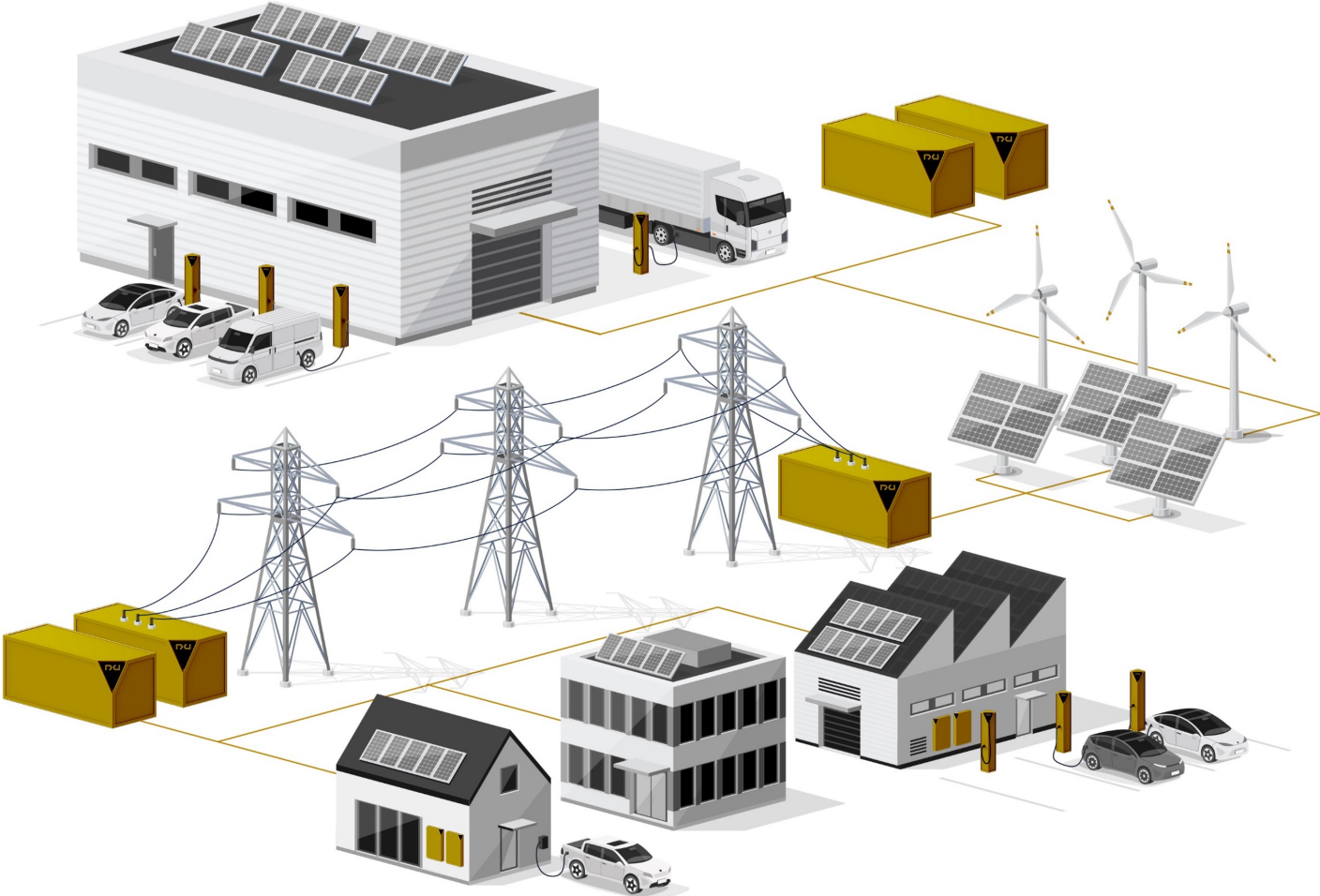
- Gigafactory-level production
- Continue build-out of Megawatt+ charging network
- Scale energy storage-as-a-service
- Maintenance & services
- Data collection, analytics & client decision support
- Connected and integrated software to manage solutions
- Over The Air (OTA) Updates & Cloud Services

## Leap – Expansion of the NXU Ecosystem

# Our Ecosystem

## Nxu™ Energy Storage + Megawatt+ Charging Infrastructure

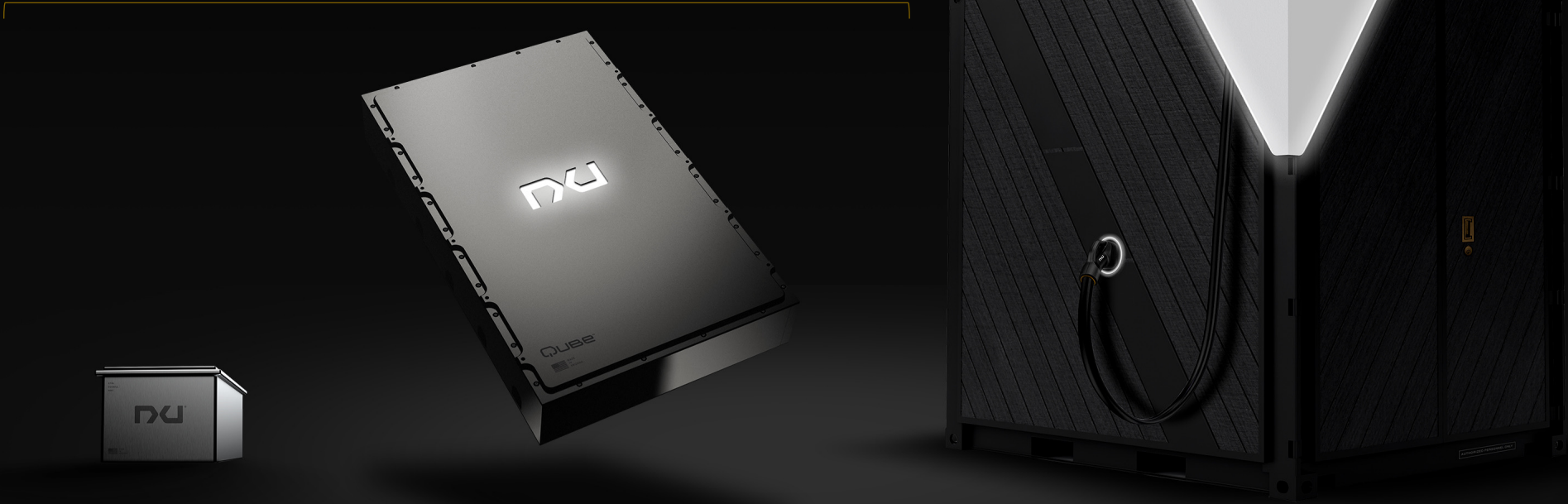
- AUGMENT THE GRID
- STORAGE FOR RENEWABLE ENERGY SOURCES
- SUSTAINABLE BACK-UP POWER ON-DEMAND





# Our Ecosystem

VERTICALLY INTEGRATED



Qcell™

QUBE™

1.5+ MEGAWATT CHARGING

FOUNDATIONAL TO ENERGY STORAGE

# Energy Storage Solutions

MODULAR & SCALABLE

## Nxu™ QCell Technology

MADE IN ARIZONA

NMC811 CHEMISTRY

9-MIN CHARGE TIME IN DEVELOPMENT

YIELDS UP TO 20% MORE PACK DENSITY



**QCELL™**

## Nxu™ Qube Battery Pack

30 KWH BATTERY PACK

HIGH ENERGY DENSITY

BEST-IN-CLASS THERMAL MANAGEMENT



**QUBE™**

90 QCells™



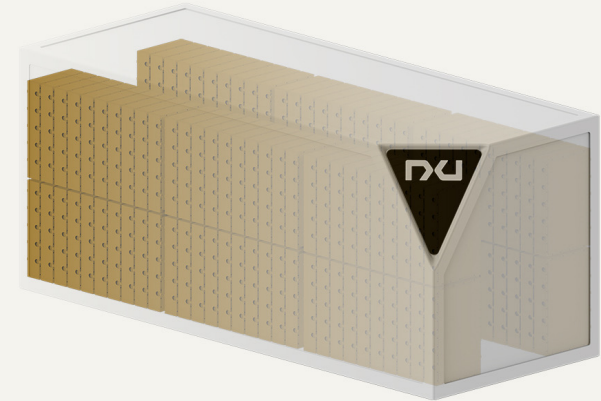
**QUBE+™**

1 Qube™  
BESS

## Nxu™ Qube+ Energy Storage

COMMERCIAL ENERGY STORAGE SYSTEM

SUBSCRIPTION-BASED ENERGY-AS-A-SERVICE



**QUBE+™**

120 Qubes™  
BESS



# QCell

NXU™ FOUNDATION | DIFFERENTIATED & HIGH PERFORMING

## Optimal Design

HIGHEST MECHANICAL ENERGY DENSITY

## Up to 8x Lower

HEAT TRANSFER

## As Low As 2C

LOWER TEMP DELTA

## BMS • BUS • Thermal

FEWER PARTS



MADE IN ARIZONA

# Qube

BATTERY PACK

**306V**

DISCHARGE LIMIT

**30 kWh**

USABLE CAPACITY

**15-Minute**

REPEATABLE CHARGING

**Reduced Complexity**

NO EXTERNAL PUMPS, RADIATORS, HOSES, VALVES

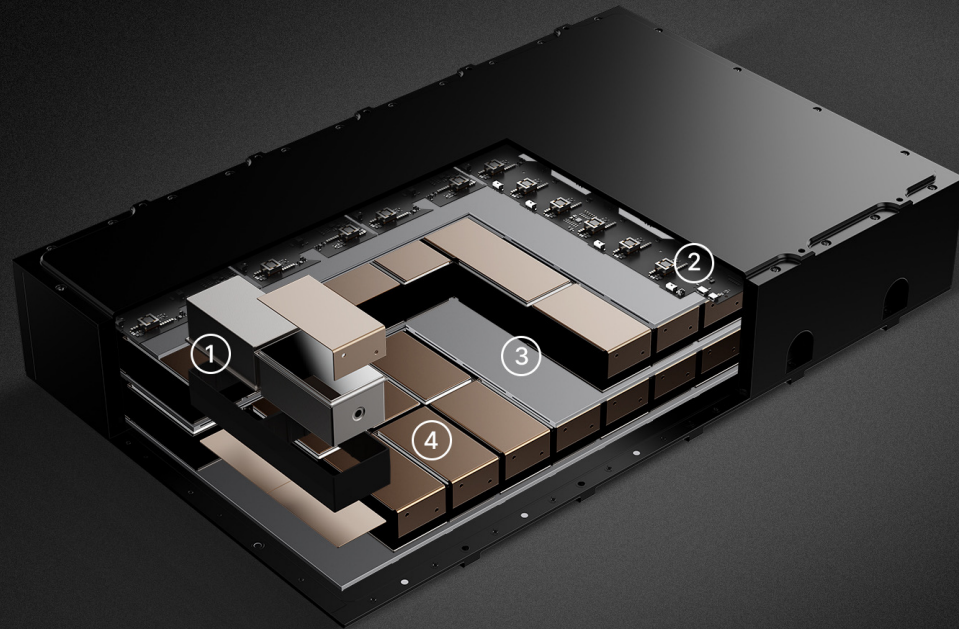


(05)



# Qube

## BATTERY PACK



### PACK STRUCTURE

9)

1. QCell: Energy dense powerhouse of the pack.
2. Active BMS: Controls cycle life, heals cells, and leveraged excess heat to support charging or conditioning.
3. Active Thermal Management: Decreases charge time while increasing reliability.
4. Cell-to-Pack (CTP) Assembly: Designed as one module, CTP optimizes Wh/kg through direct cell integration.





# Megawatt+ Charger

BACKWARDS COMPATIBLE & FUTURE PROOF



(07,08)



# Megawatt+

ADVANCED CHARGING

## World's First

DEMONSTRATED MW+ CHARGING

## Universal Design

NO SPECIFIC PROTOCOLS

The only dual tech solution supporting  
DC up to 1.5MW and AC up to 50kW  
3-phase charging



# Qube+

ENERGY STORAGE BEYOND VEHICLES & EQUIPMENT

## BESS

RESIDENTIAL APPLICATION

## BESS

COMMERCIAL APPLICATION

## Micro-Grid

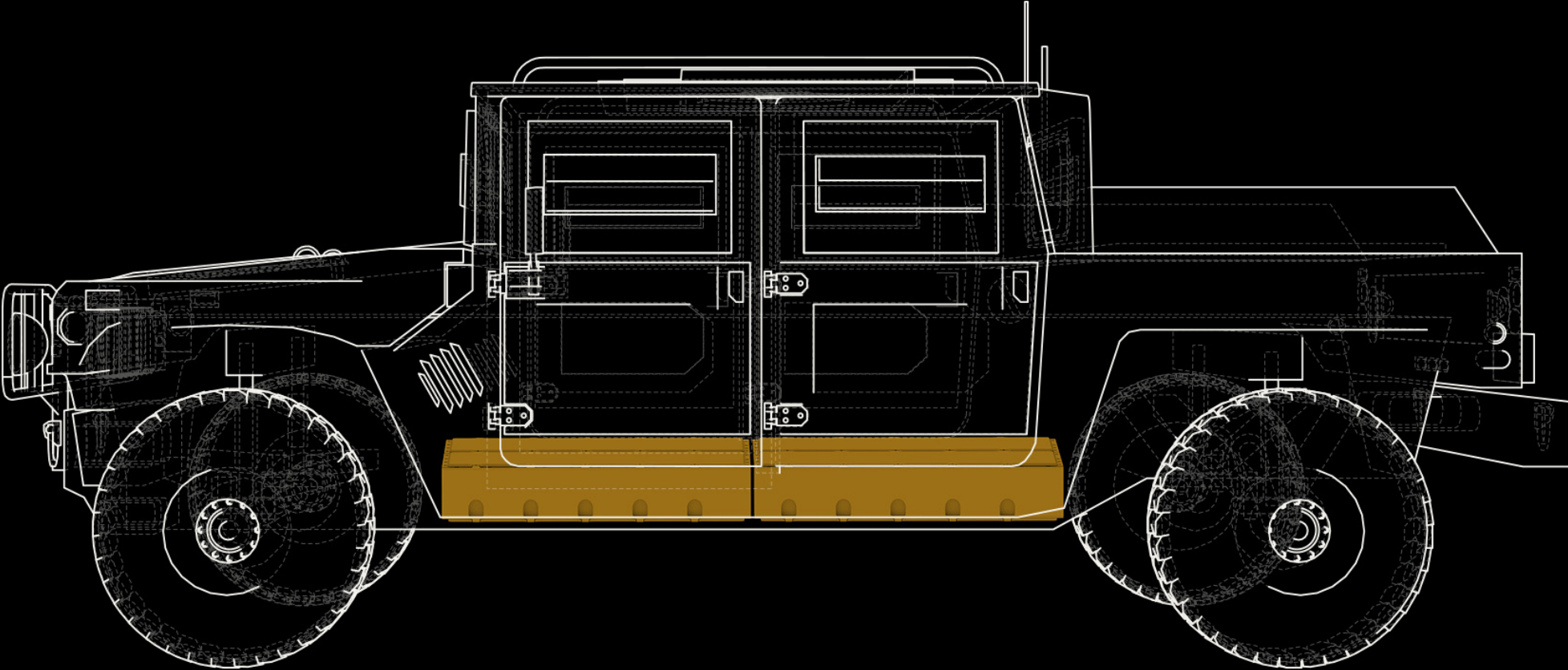
OFF-GRID ENERGY STORAGE

Consistent energy storage solution leveraging sustainable power to decrease the effects or risks of outages



# Qube

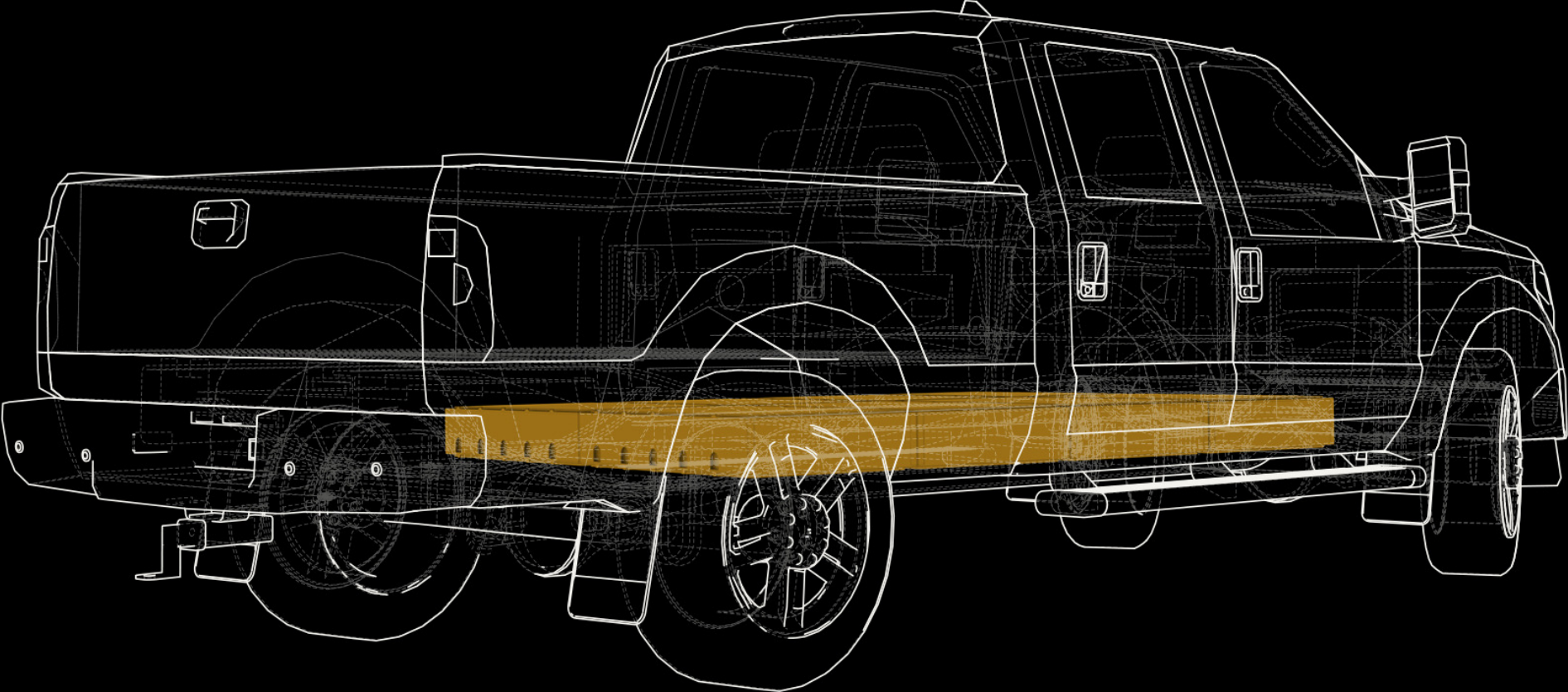
APPLICATION





# Qube

APPLICATION





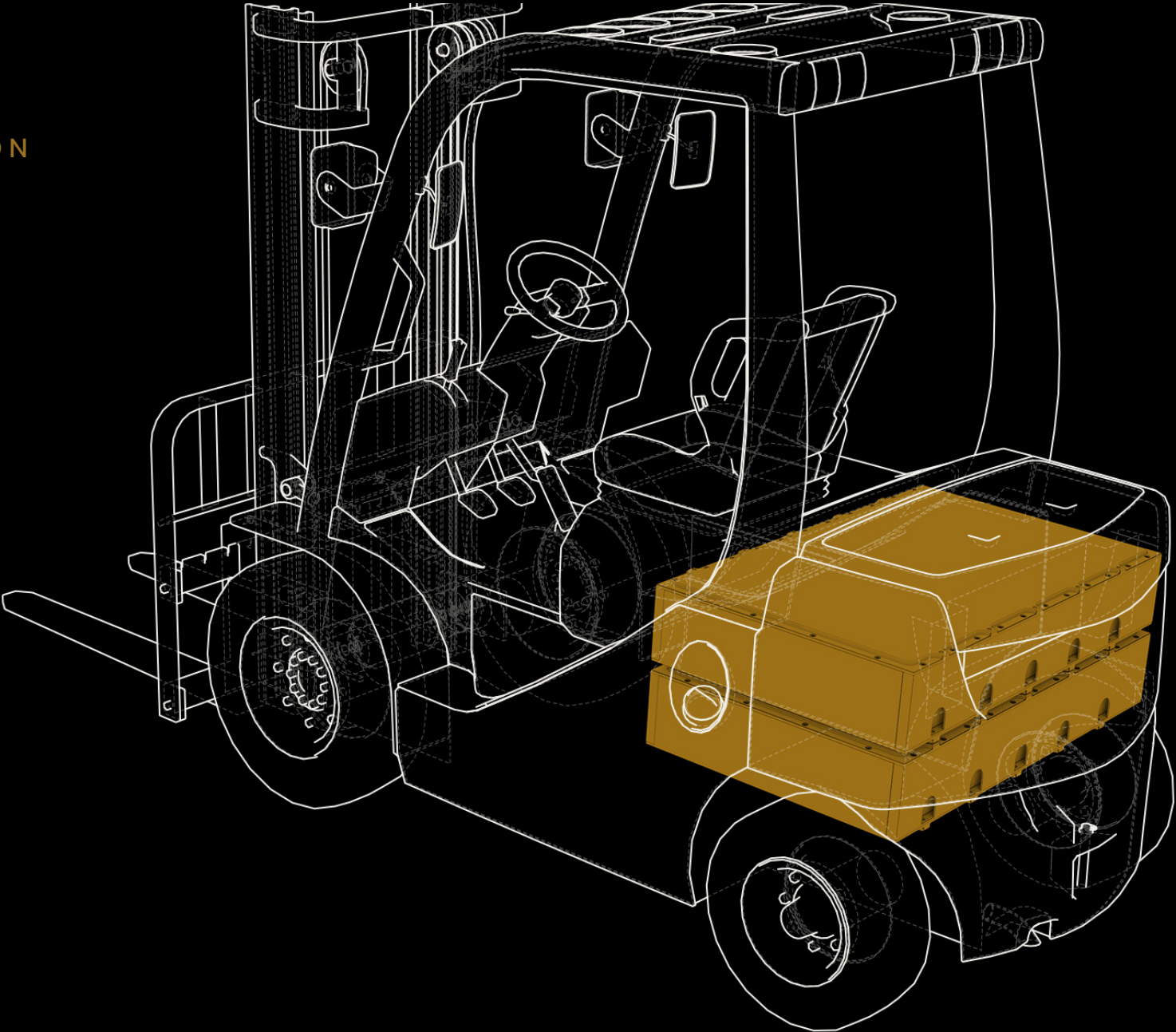
# Qube

APPLICATION



# Qube

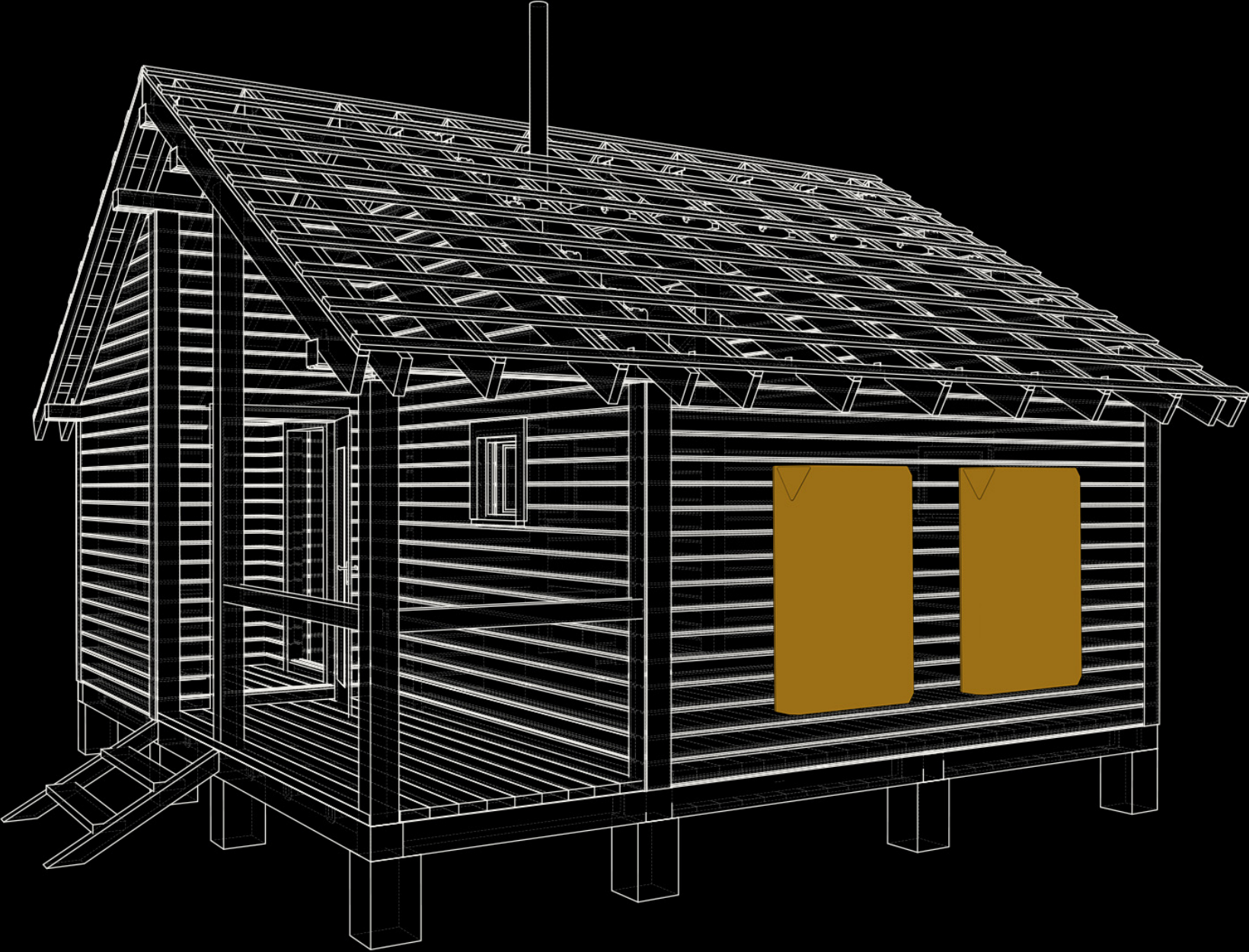
APPLICATION





# Qube+

APPLICATION



# Qube+

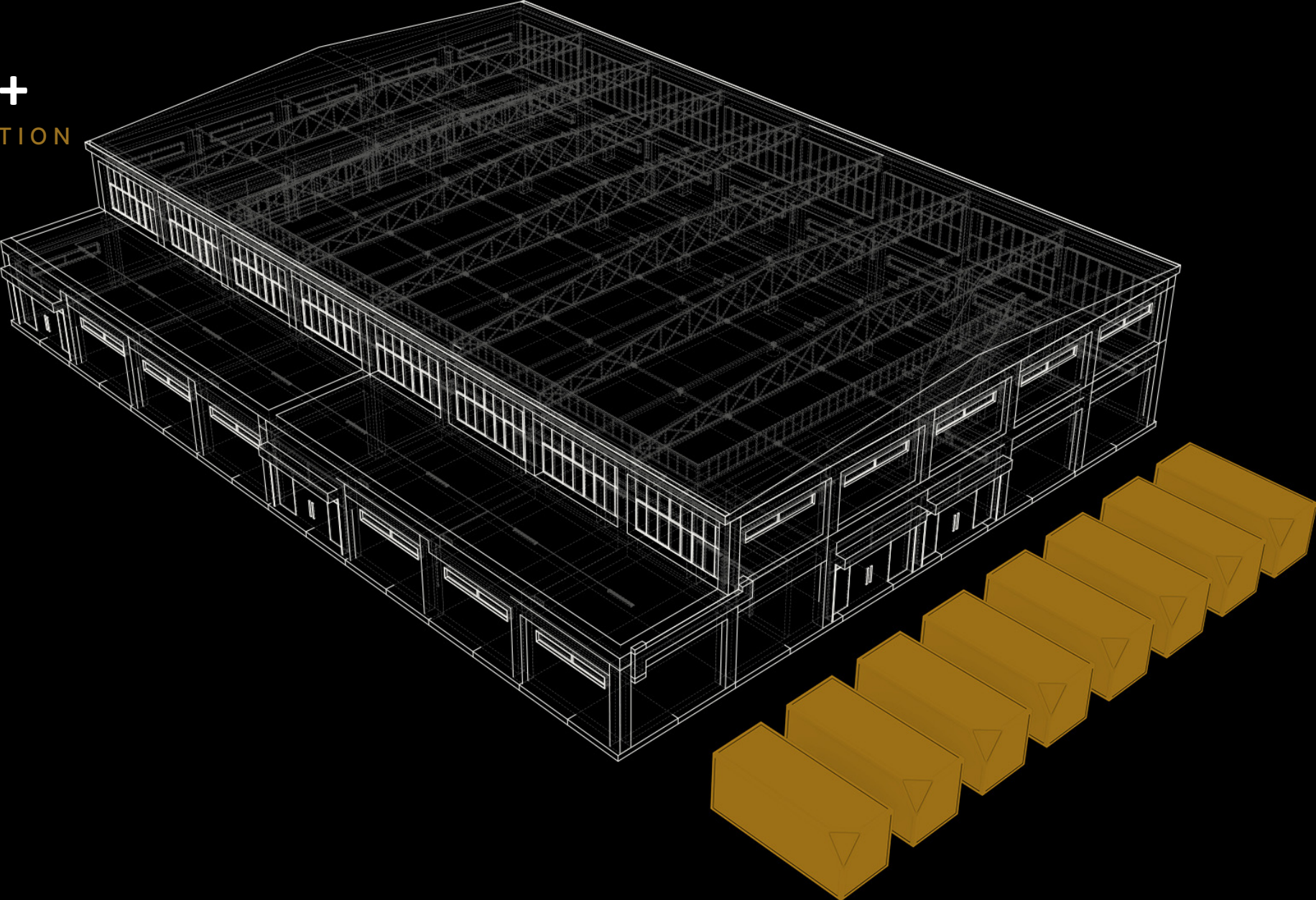
APPLICATION





# Qube+

APPLICATION





FACEBOOK  
[@NxuInc](#)



YOUTUBE  
[@NxuInc](#)



TWITTER  
[@NxuInc](#)



INSTAGRAM  
[@brand\\_nxu](#)

# Appendix

- 01 Information represented as of June 1, 2023.
- 02 Polaris Market Research
- 03 Acumen Research & Consulting
- 04 Acumen Research & Consulting
- 05 Nxu™ QCell & Qube are in the Design Verification & Test (DVT) Phase.
- 06 Nxu™ QCell is currently in Production Verification & Test (PVT) Phase.
- 07 Nxu™ Megawatt+ Charger currently in Design Verification & Test (DVT) Phase.
- 08 Nxu™ Megawatt+ Charger portable prototype.
- 09 Nxu™ Megawatt+ Charger handle prototype.
- 10 Nxu™ Qube+ portable prototype.